



City of Toronto Solid Waste Management Services

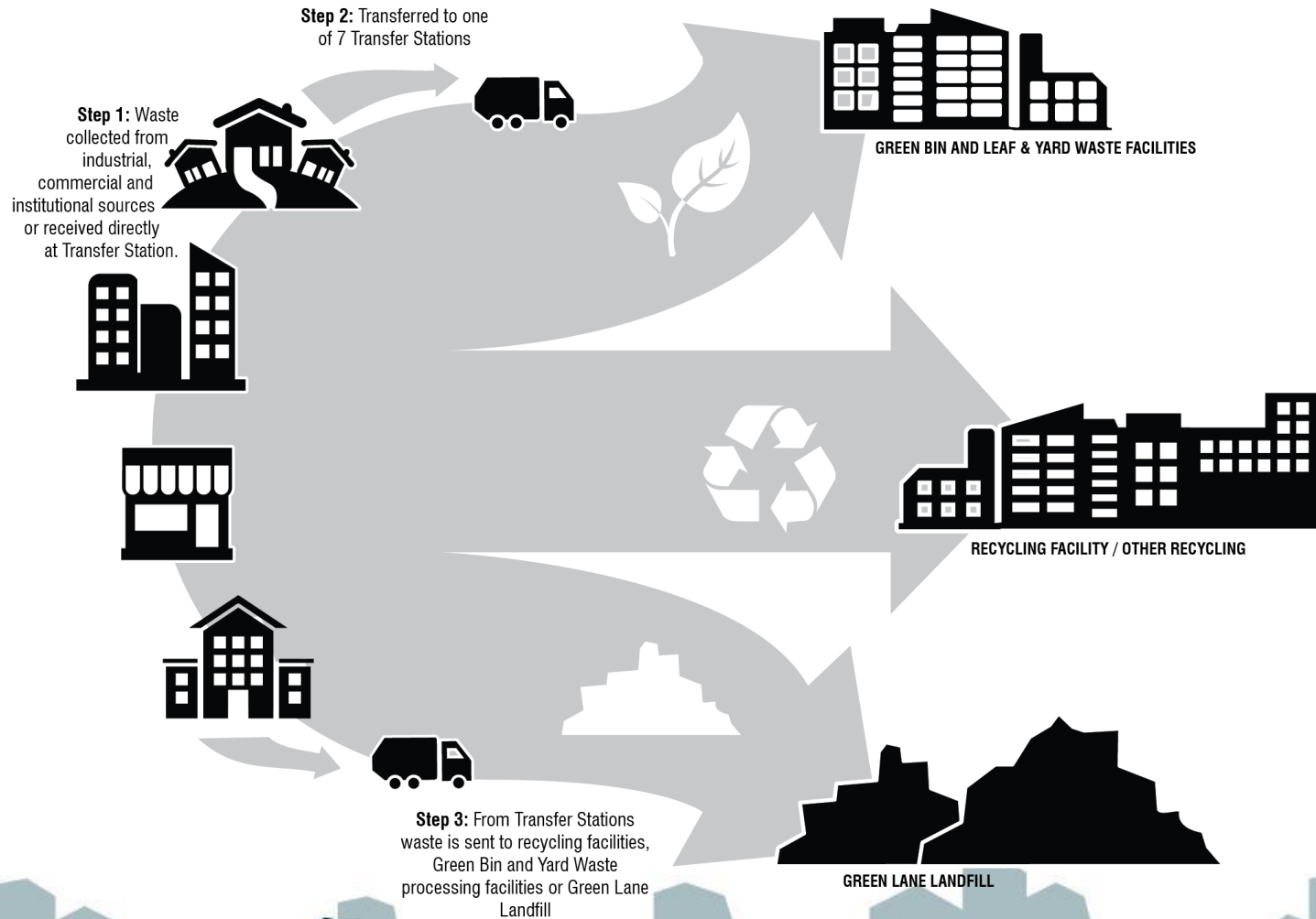
Property Management Expo

November 30, 2016

**Jim McKay
General Manager
Solid Waste Management Services
City of Toronto**



City of Toronto's Integrated Waste Management System



Long Term Waste Management Strategy



Long Term Waste Strategy Recommended Options



3Rs: Reduce, Reuse Recycle Options

Focus on reducing, reusing and recycling/composting waste to promote resource conservation and reduced environmental impacts.



**Food waste
Reduction
Strategy**



**Textile
Collection
and Re-Use
Strategy**



**Mobile
Drop-Off
Service**



**Sharing
Library**



**Swaps and
Exchange
Events**



**Reverse
Vending
Machines**

Multi-Residential Specific Options

In addition to the 3Rs opportunities, the Waste Strategy recommends other ways to increase diversion at Multi-Residential buildings.



**Data Management
and Accessibility**



**Support for Community
Composting**



**By-Laws and
Enforcement**

55% of Torontonians live in apartments and condos and 45% live in single family homes.

- Residents in single family homes divert 65% of their waste
- Residents in apartments & condos divert 27% of their waste

Key Multi-Residential Engagement Outcomes of Waste Strategy

- City Council direction: consult on the feasibility of requiring all Multi-Residential and Industrial, Commercial and Institutional buildings, regardless of collection provider, to develop and implement waste diversion programs that correspond with all waste diversion programs provided to City-serviced customers
 - Report back to Public Works and Infrastructure Committee in 2017
- A Multi-Residential Waste Diversion Advisory Group will be established in 2017



Proposed Multi-Residential Rates

- 2017 Budget process currently underway
 - Executive Committee – December 1, 2016
 - City Council – December 13-14, 2016
 - Changes effective – January 1, 2017

Customer Group	2016 gross fee	2017 gross fee	gross fee % increase	2016 customer cost/yr	2017 customer cost*/yr	Customer cost \$ Increase
Multi-Residential base fee per unit	\$209.04	\$211.13	1.0%	\$24.04	\$26.13	\$2.09
Multi-Residential excess fee per yd ³	\$14.50	\$14.65	1.0%	\$14.50	\$14.65	\$0.15

* Assuming 2016 rebate levels in 2017. 2017 rebates to be determined during 2017 Tax-Based Budget.

Waste Diversion Services Provided by the City



Blue Bin Recycling



Green Bin
Organics



Toxic Taxi
(Household
Hazardous Waste)



E-waste



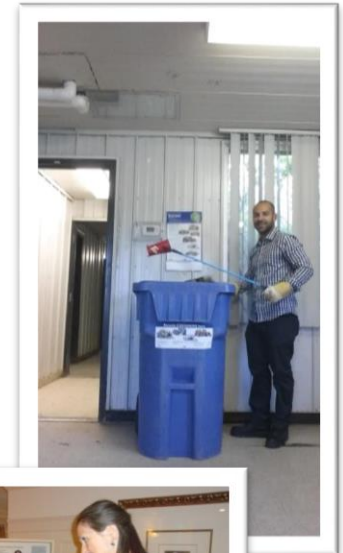
Oversized and
Metal Items



Yard Waste

PROGRAMS

- Free organics kitchen catchers and in unit recycling bags for all residents
- Staff will do site visits to provide advice to property managers and superintendents
- Staff can host lobby displays to educate residents



Mayor's Towering Challenge



- Over 130 buildings have registered for challenge
- Over the 6 month challenge period, SWMS staff will provide outreach and support to registered buildings
- Online resources and tools available at:
toronto.ca/toweringchallenge

Contamination Campaign



Contamination is Problematic

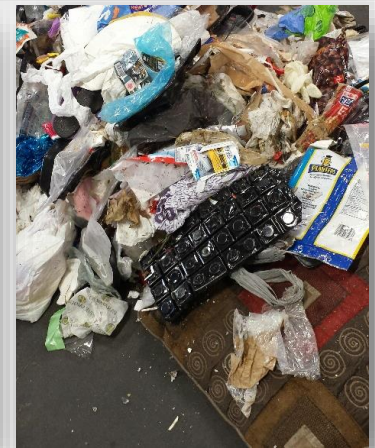
Contamination is anything that doesn't belong in the Blue Bin and Green Bin Programs. It's a problem:

- Reduces revenue and extra processing costs
- Garbage mixed with recyclables and organics will contaminate a load
- May result in non-collection at the building
- Is hard to remove from large recycling and organics containers
- Residents need to know what can & cannot be diverted
- Can also have Blue Bin and Green Bin material in the garbage



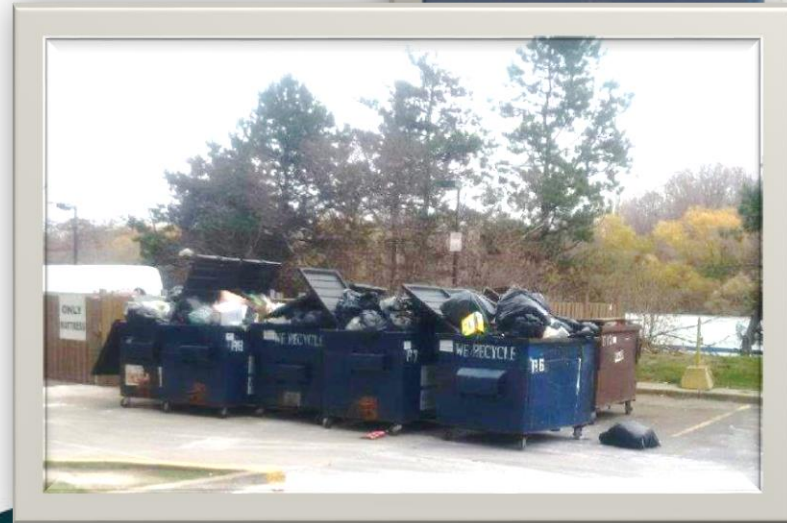
Contamination: Problematic Materials

- Contamination of Blue Bin Recyclables is on the rise
- Blue Bins have almost 25% improper materials by weight
- Amount of food waste improperly placed in Blue Bin is growing
- Textiles found in recycling on the rise
- VHS tapes, chains, hoses, electrical cords, medical waste, coffee cups, HHW, e-waste, black bags also found in Blue Bins



Managing Contamination at Multi-Residential Buildings

- Staff will inspect building recycling bins prior to collection
- Recycling bins with obvious garbage/non-recyclables will be rejected from recycling collection
- Rejected materials will be collected as garbage and building contact will be informed
- Cost of collecting rejected material will be added to the building's garbage bill



Preventing Contamination

- Sign board with actual samples of what is not accepted in the program
- Signage (posters and stickers) on and above the container
- Remove contamination as soon as it occurs
- Caution: use litter pickers or work gloves



Promotion and Education

Residents need to know:

- What can & cannot be diverted
- 3Rs is a priority for your building
- How to prepare items for diversion
- Location of Blue Bins (recycling) and Green Bins (organics)
- Benefits of participation

Toronto Recycling Guide

Do it right!

We all want to recycle all we can, but many plastics and metals can't go in recycling. The wrong item can contaminate the recycling stream, damage equipment and cause workplace injuries. Use **WASTE WIZARD** at toronto.ca/recycle or this guide to learn how to properly recycle and dispose of waste items.

WASTE WIZARD

Learn what to do with your waste materials.

Search

If you don't recycle properly, we

Thank you for recycling!

Please remember:

Electronics

Please do not put electronics in recycling or garbage. E-waste brought to a facility where they are packaged for recycling.

Household Hazardous Waste

Items such as batteries, paint, pesticides, etc. should not be accepted at Drop-off Depots and Community Environment check dowhatyoucan.ca

Propane and helium tanks and cylinders

Even when empty, these are a dangerous hazardous waste garbage. Take them to a Drop-off Depot or Community En

Curb-side collection:

CHECK Collection Calendar

VISIT toronto.ca/recycle

Multi-residential collections:

VISIT toronto.ca/recycle or ask your property manager.

Put Waste in its Place

Recycling

• Please do not contaminate recycling or

the Green Bin with these items:

These belong in garbage.

Plastic bottles, jugs, tubs, etc.

Styrofoam, Styrofoam cups, etc.

Household hazardous waste

Flammable liquids, gases, solids

Refrigerators, air conditioning units

Stoves, ovens, dishwashers

Washing machines, dryers

Freezers, ice makers

Refrigerators, air conditioning units

Stoves, ovens, dishwashers

Washing machines, dryers

Freezers, ice makers

Refrigerators, air conditioning units

Stoves, ovens, dishwashers

Washing machines, dryers

Freezers, ice makers

Refrigerators, air conditioning units

Stoves, ovens, dishwashers

Washing machines, dryers

Freezers, ice makers

Refrigerators, air conditioning units

Stoves, ovens, dishwashers

Washing machines, dryers

Freezers, ice makers

Refrigerators, air conditioning units

Stoves, ovens, dishwashers

Washing machines, dryers

Freezers, ice makers

Refrigerators, air conditioning units

Stoves, ovens, dishwashers

Washing machines, dryers

Freezers, ice makers

Refrigerators, air conditioning units

Stoves, ovens, dishwashers

Washing machines, dryers

Freezers, ice makers

Refrigerators, air conditioning units

Stoves, ovens, dishwashers

Washing machines, dryers

Freezers, ice makers

Refrigerators, air conditioning units

Stoves, ovens, dishwashers

Washing machines, dryers

Freezers, ice makers

Refrigerators, air conditioning units

Stoves, ovens, dishwashers

Washing machines, dryers

Freezers, ice makers

Refrigerators, air conditioning units

Stoves, ovens, dishwashers

Washing machines, dryers

Freezers, ice makers

Refrigerators, air conditioning units

Stoves, ovens, dishwashers

Washing machines, dryers

Freezers, ice makers

Refrigerators, air conditioning units

Stoves, ovens, dishwashers

Washing machines, dryers

Freezers, ice makers

Refrigerators, air conditioning units

Stoves, ovens, dishwashers

Washing machines, dryers

Freezers, ice makers

Refrigerators, air conditioning units

Stoves, ovens, dishwashers

Washing machines, dryers

Freezers, ice makers

Refrigerators, air conditioning units

Stoves, ovens, dishwashers

Washing machines, dryers

Freezers, ice makers

Refrigerators, air conditioning units

Stoves, ovens, dishwashers

Washing machines, dryers

Freezers, ice makers

Refrigerators, air conditioning units

Stoves, ovens, dishwashers

Washing machines, dryers

Freezers, ice makers

Refrigerators, air conditioning units

Stoves, ovens, dishwashers

Washing machines, dryers

Freezers, ice makers

Refrigerators, air conditioning units

Stoves, ovens, dishwashers

Washing machines, dryers

Freezers, ice makers

Refrigerators, air conditioning units

Stoves, ovens, dishwashers

Washing machines, dryers

Freezers, ice makers

Refrigerators, air conditioning units

Stoves, ovens, dishwashers

Washing machines, dryers

Freezers, ice makers

Refrigerators, air conditioning units

Stoves, ovens, dishwashers

Washing machines, dryers

Freezers, ice makers

Refrigerators, air conditioning units

Stoves, ovens, dishwashers

Washing machines, dryers

Freezers, ice makers

Refrigerators, air conditioning units

Stoves, ovens, dishwashers

Washing machines, dryers

Freezers, ice makers

Refrigerators, air conditioning units

Stoves, ovens, dishwashers

Washing machines, dryers

Freezers, ice makers

Refrigerators, air conditioning units

Stoves, ovens, dishwashers

Washing machines, dryers

Freezers, ice makers

Refrigerators, air conditioning units

Stoves, ovens, dishwashers

Washing machines, dryers

Freezers, ice makers

Refrigerators, air conditioning units

Stoves, ovens, dishwashers

Washing machines, dryers

Freezers, ice makers

Refrigerators, air conditioning units

Stoves, ovens, dishwashers

Washing machines, dryers

Freezers, ice makers

Refrigerators, air conditioning units

Stoves, ovens, dishwashers

Washing machines, dryers

Freezers, ice makers

Refrigerators, air conditioning units

Stoves, ovens, dishwashers

Washing machines, dryers

Freezers, ice makers

Refrigerators, air conditioning units

Stoves, ovens, dishwashers

Washing machines, dryers

Freezers, ice makers

Refrigerators, air conditioning units

Stoves, ovens, dishwashers

Washing machines, dryers

Freezers, ice makers

Refrigerators, air conditioning units

Stoves, ovens, dishwashers

Washing machines, dryers

Freezers, ice makers

Refrigerators, air conditioning units

Stoves, ovens, dishwashers

Washing machines, dryers

Freezers, ice makers

Refrigerators, air conditioning units

Stoves, ovens, dishwashers

Washing machines, dryers

Freezers, ice makers

Refrigerators, air conditioning units

Stoves, ovens, dishwashers

Washing machines, dryers

Freezers, ice makers

Refrigerators, air conditioning units

Stoves, ovens, dishwashers

Washing machines, dryers

Freezers, ice makers

Refrigerators, air conditioning units

Stoves, ovens, dishwashers

Washing machines, dryers

Freezers, ice makers

Refrigerators, air conditioning units

Stoves, ovens, dishwashers

Washing machines, dryers

Freezers, ice makers

Refrigerators, air conditioning units

Stoves, ovens, dishwashers

Washing machines, dryers

Freezers, ice makers

Refrigerators, air conditioning units

Stoves, ovens, dishwashers

Washing machines, dryers

Freezers, ice makers

Refrigerators, air conditioning units

Stoves, ovens, dishwashers

Washing machines, dryers

Freezers, ice makers

Refrigerators, air conditioning units

Stoves, ovens, dishwashers

Washing machines, dryers

Freezers, ice makers

Refrigerators, air conditioning units

Stoves, ovens, dishwashers

Washing machines, dryers

Freezers, ice makers

Refrigerators, air conditioning units

Stoves, ovens, dishwashers

Washing machines, dryers

Freezers, ice makers

Refrigerators, air conditioning units

Stoves, ovens, dishwashers

Washing machines, dryers

Freezers, ice makers

Refrigerators, air conditioning units

Stoves, ovens, dishwashers

Washing machines, dryers

Freezers, ice makers

Refrigerators, air conditioning units

Stoves, ovens, dishwashers

Washing machines, dryers

Freezers, ice makers

Refrigerators, air conditioning units

Stoves, ovens, dishwashers

Washing machines, dryers

Freezers, ice makers

Refrigerators, air conditioning units

Stoves, ovens, dishwashers

Washing machines, dryers

Freezers, ice makers

Refrigerators, air conditioning units

Stoves, ovens, dishwashers

Washing machines, dryers

Freezers, ice makers

Refrigerators, air conditioning units

Stoves, ovens, dishwashers

Washing machines, dryers

Freezers, ice makers

Refrigerators, air conditioning units

Stoves, ovens, dishwashers

Washing machines, dryers

Freezers, ice makers

Refrigerators, air conditioning units

Stoves, ovens, dishwashers

Washing machines, dryers

Freezers, ice makers

Refrigerators, air conditioning units

Stoves, ovens, dishwashers

Washing machines, dryers

Freezers, ice makers

Refrigerators, air conditioning units

Stoves, ovens, dishwashers

Washing machines, dryers

Freezers, ice makers

Refrigerators, air conditioning units

Stoves, ovens, dishwashers

Washing machines, dryers

Freezers, ice makers

Refrigerators, air conditioning units

Stoves, ovens, dishwashers

Washing machines, dryers

Freezers, ice makers

Refrigerators, air conditioning units

Stoves, ovens, dishwashers

Washing machines, dryers

Freezers, ice makers

Refrigerators, air conditioning units

Stoves, ovens, dishwashers

Washing machines, dryers

Freezers, ice makers

Refrigerators, air conditioning units

Stoves, ovens, dishwashers

Washing machines, dryers

Freezers, ice makers

Refrigerators, air conditioning units

Stoves, ovens, dishwashers

Washing machines, dryers

Freezers, ice makers

Refrigerators, air conditioning units

Ways Toronto can help

- Signage and bin stickers
- Posters for display
- Apartment Recycling Calendar
- Roll-up display banners for loan
- In-unit containers (recycling and organics)
- 3Rs Ambassador Volunteer Program
- Lobby displays/Presentations
- Site visits
- toronto.ca/recycling



Resident Engagement: 3Rs Ambassador Volunteer Program

- **Volunteer-driven** waste diversion education and outreach program
- City trains volunteers
- Residents teaching residents
 - Examples of activities: lobby displays, presentations, sorting games
- City provides **free** resources and support



Community-based, customizable and creative to suit your buildings' waste diversion needs!

20